

Bankston

Edition Office



## Finish Care Guide

How to care for your door hardware

## Finish Care Information & FAQs

### How can I best care for my Edition Office products?

#### **Bronze:**

Bronze products will patina, particularly at points of contact, and can include a variety of tonal changes. Bronze will also naturally darken and may develop verdigris depending on its environment. If there is a desire to restore the product to its original appearance, a light application of metal polish, followed by a beeswax protectant will achieve this.

#### **Patinated Bronze:**

This oil rubbed finish will wear over time to expose the bronze underneath and will feature lighter areas at points of contact where the bronze has been rubbed back to a golden tone. Water and chemical-based cleaners, soaps or abrasive materials will damage the finish and should not be used. We recommend cleaning with a soft lint-free cloth, followed by a beeswax protectant. As the finish is unlacquered, regular application of the wax will be necessary to prolong the original patinated finish.

#### **Aluminium:**

These products can be restored to their original appearance with a light application of metal polish, followed by a beeswax protectant. Consider a silver toned polish to enhance lustre.

### How durable are the Edition Office Casts product materials?

Bronze will oxidise when exposed to air, developing a patina coating. A brown, black, red or blue to Verdigris on Bronze is a sign of normal, harmless corrosion. This outer layer protects the inner layers of the bronze object from deteriorating. This coating is often considered attractive or desirable.

Like brass, Bronze is made of metal alloys, meaning they are a combination of two or more different metals. Bronze is an alloy of copper and tin, sometimes with other elements such as phosphorous or aluminium added.

Aluminium does not rust or degrade over time, making it a highly durable material.

### Does the Edition Office Casts collection have 'living finishes'?

Yes - the patina of these finishes will change with use over the life of the product, thereby adding character to the item.

### What materials are the Edition Office Casts range made from?

The Edition Office Casts collection is crafted from solid Bronze and Aluminium, both of which are raw materials, treated only with a thin layer of corrosion protector.

For those seeking a distinct aesthetic, we offer the Patinated Bronze. The Bronze surface is rubbed with oil to give an aged appearance, darkening the vibrant Bronze colour into a rich organic hue.

Over time, the raw materials used in the Casts collection undergo a natural evolution in their surface character. The metal is fluid and dynamic when cast, and the memory of this process remains in the finished product, as the pitting and pour marks reveal the transition from solid, to liquid, and back again. This gives each piece a unique character which embodies the ongoing evolution of the material over time.

The internal mechanisms of the Casts collection are machined to achieve an exact fit.

### How are the finishes of the Edition Office Casts products achieved?

The Bronze and Aluminium are raw materials with a thin layer of corrosion protector applied in the final stages of production to slow the process of patination. Over time this coating will wear off - the speed at which this happens will be determined by the environment and the frequency of use of the item.

For Patinated Bronze items, we apply a chemical ageing process to achieve the patinated finish, followed by a layer of corrosion protector. The Casts collection pieces are not lacquered.

### Will the Edition Office aluminium patina the way the bronze finishes will?

Bronze naturally ages through a process called patination, unlike Aluminium, which does not patinate. Instead, Aluminium ages through anodization, where exposure to air forms a protective layer on the metal. Notably, this process has minimal impact on Aluminium's colour, maintaining its finish for a long-lasting appearance.

## Finish Care Information & FAQs

### **What finishes are offered in the Edition Office Casts collection?**

The Edition Office Casts collection are made from Bronze and Aluminium, which are raw materials and are not coated in any finish other than a layer of corrosion protector. For these items, the 'finish' refers to the material of the product itself.

We also offer our Patinated Bronze finish, which is achieved by rubbing oil into the Bronze to naturally age it.

View our Door Furniture Warranty Policy here:



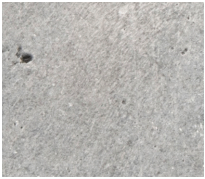
### **Who should I contact if I have questions about my finishes?**

The Southern Design Group Customer Service Team support our customer base of distributors, builders, architects and designers. We welcome queries from members of the public through our websites and provide phone assistance.

Contact us at [info@bankston.com](mailto:info@bankston.com)



## Finish Range



---

### Aluminium

Aluminium is comprised of 100% recycled alloy, limiting impacts to the environment by reducing unsustainable energy expenditure during extraction. Aluminium is also a leading choice in the use of more sustainable metals. Light but sturdy and resistant to corrosion, it has the unique ability to be recycled indefinitely.

**Care:** These products can be restored to their original appearance with a light application of metal polish, followed by a beeswax protectant. Consider a silver toned polish to enhance lustre.

**Caution:** When Aluminium is exposed to the weather, several processes can occur, leading to its degradation and transformation. Here are some of the effects and changes that can happen to Aluminium when it is exposed to various weather conditions:

**Oxidation:** Aluminium readily reacts with oxygen in the air, forming a thin layer of Aluminium oxide on its surface. This layer acts as a protective barrier, preventing further corrosion. However, if the Aluminium surface is damaged or the protective oxide layer is compromised, the underlying Aluminium can be exposed to further corrosion.

**Corrosion:** Aluminium can undergo corrosion when it comes into contact with certain corrosive elements in the environment, such as moisture, salts, acids, or pollutants. Corrosion can result in the formation of pitting, white corrosion spots, or a dull, rough surface.

**Saltwater exposure:** When Aluminium is exposed to saltwater, the chloride ions present can accelerate corrosion. This is particularly problematic in marine environments, where Aluminium structures or components can experience accelerated deterioration due to the corrosive effects of saltwater.

**Weathering:** Exposure to ultraviolet (UV) radiation from sunlight can cause a process called weathering. UV radiation can degrade the surface of Aluminium, leading to colour changes, fading, and the formation of a chalky or powdery residue on the surface.



---

### Patinated Bronze

For the Patinated Bronze finish, an oil rubbing of the existing Bronze gives an aged appearance, darkening the vibrant Bronze colour into a rich organic hue.

**Care:** This finish will wear over time to expose the bronze underneath. This finish will feature lighter areas at points of contact where the bronze has been rubbed back to a golden tone. Water and chemical-based cleaners, soaps or abrasive materials will damage the finish and should not be used. We recommend cleaning with a soft lint-free cloth, followed by a beeswax protectant. As the finish is unlacquered, regular application of the wax will be necessary to maintain the original chemically patinated finish.

**Caution:** As the finish is unlacquered, regular application of beeswax will be necessary to maintain the original chemically patinated finish.



---

### Bronze

The raw long-lasting, hard-wearing Bronze material exposes the distinctive earthy hue, contextualising the minimal process. The bright surface texture oscillates between a vivid metallic gold and deeper ochre tone. Left to oxidise, as it darkens it reveals a lived history and takes on a new form.

**Care:** Bronze products will patina, particularly at points of contact, and can include a variety of tonal changes. Bronze will also naturally darken and may develop verdigris depending on its environment. If there is a desire to restore the product to its original appearance, a light application of metal polish, followed by a beeswax protectant will achieve this.

**Caution:** Bronze products will patina, particularly at points of contact. As the finish is unlacquered, regular application of bee's wax will be necessary to maintain the finish.

**Australia**

14-16 Stepney Street  
Stepney, South Australia 5069  
**P:** +61 (0)8 8362 1133

**New Zealand**

**P:** +64 (0)6 359 0008

**[southerndesigngroup.com](http://southerndesigngroup.com)**